

George Adams

ESTATE AGENTS



103A Chorlton Road, Manchester, M15 4AR

£995 PCM



Available April 2nd 2024.

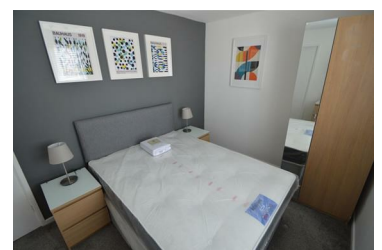
Upper ground floor, two double bedroom apartment now available in the popular location of Hulme.

The apartment comprises of a spacious lounge/dining room, fully fitted kitchen, bathroom, two double bedrooms, and hallway storage cupboard.

The flat also benefits from a secure parking space to the rear.

The property is just 15 minutes walk to ASDA Hulme, Deansgate, First Street, and Oxford Road.

Buses run from directly outside the property into the city centre every 10 minutes.



Unit 1 Bishops Corner, 321 Stretford Road, Hulme, Manchester, M15 4UW
Tel: 01612262288 Email: enquiries@georgeadamsestateagents.co.uk www.altosoftware.co.uk